

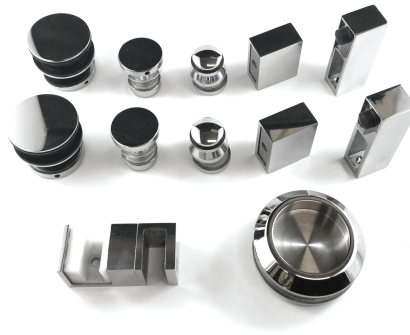
STYLE

SLIDING SHOWER SCREEN SYSTEM



installation guide

INLINE COMPONENTS



Our Kit Includes

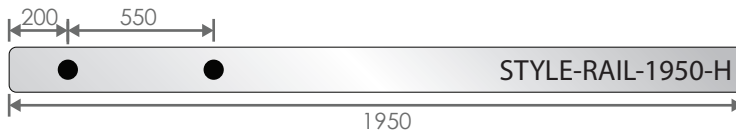
- 2 x Door Upper Rollers
- 2 x Door Stabiliser Guides
- 2 x Fixed Panel Rail Connector
- 2 x Wall Brackets
- 2 x Stoppers
- 1 x Floor Guide
- 1 x Recessed Round Handle
- 1 x Allen Key & Screws Kit

RAILS AVAILABLE

Blank Rails

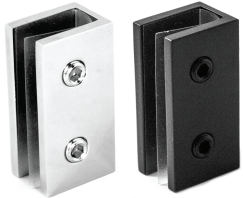


Drilled Rails



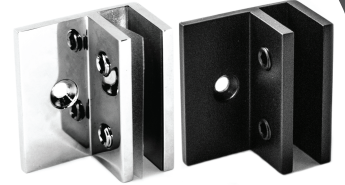
WALL BRACKETS

U-Clamps SCS-07



Solid Brass
Easily fixes glass to walls.

Offset Brackets SCS-10



Solid Brass
Suits close-to-edge wall mounting.

SEALS AVAILABLE

Panel Seal STYLE-PANEL-SEAL



2050mm Flexible PVC
Suits 10mm Glass
Easy installation on fixed panels

Door Bumper Stopper STYLE-BUMPER-STOP



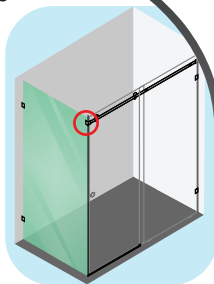
2038mm Suit 10mm Glass
Prevent contact with wall

OPTIONS AVAILABLE

Style Series End Cap STYLE-09



Solid Brass
Required to connect return panel
Suits 8-10mm Glass



Style Series Panel Rail Connector STYLE-03

Solid Brass
Extra Fixing option
To suit Style Series Rails



EXTRAS AVAILABLE

Clear Spacer Blocks SBC-03



Pack of 10
10mm x 3mm Blocks
To be placed under fixed panels

Glazing Silicone - Clear F-790

300g Tube Silicone Seal
Sanitary Silicone sealant
high performance
neutral cure silicone

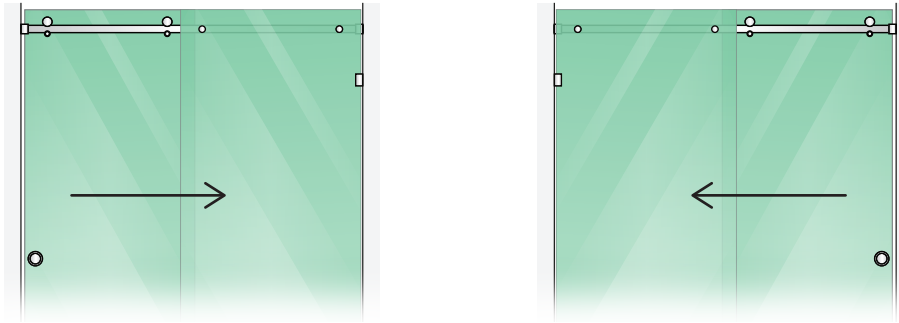


STEP-BY-STEP GUIDE

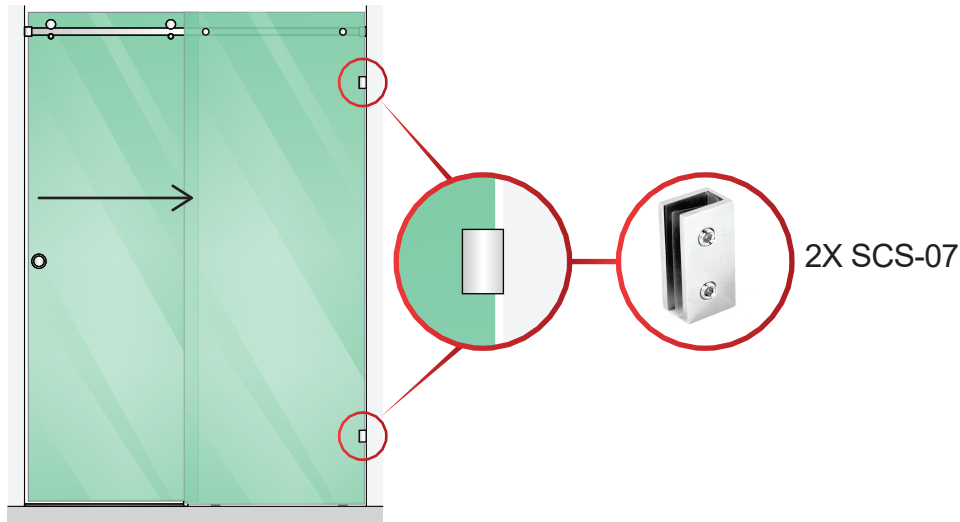
TOOLS REQUIRED

- Cordless drill
- Pencil
- Hacksaw
- Level
- Ø8mm masonry drill bit
- Tape measure
- Screwdriver
- Silicone gun

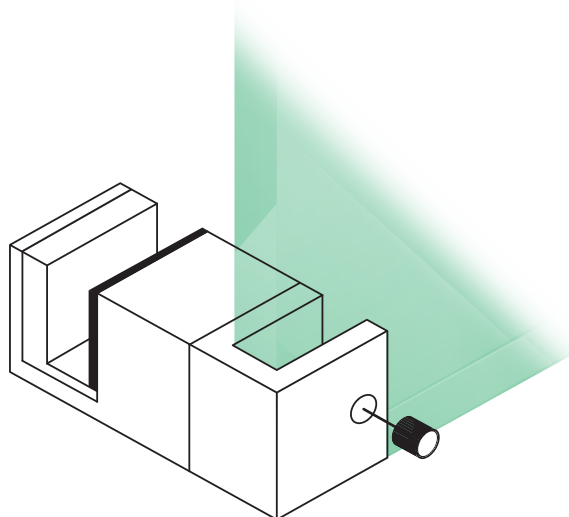
1 Choose if shower will be set up sliding from the left or from the right.



2 Fit the two fixed panel wall brackets (SCS-07) to the wall opposite the door.

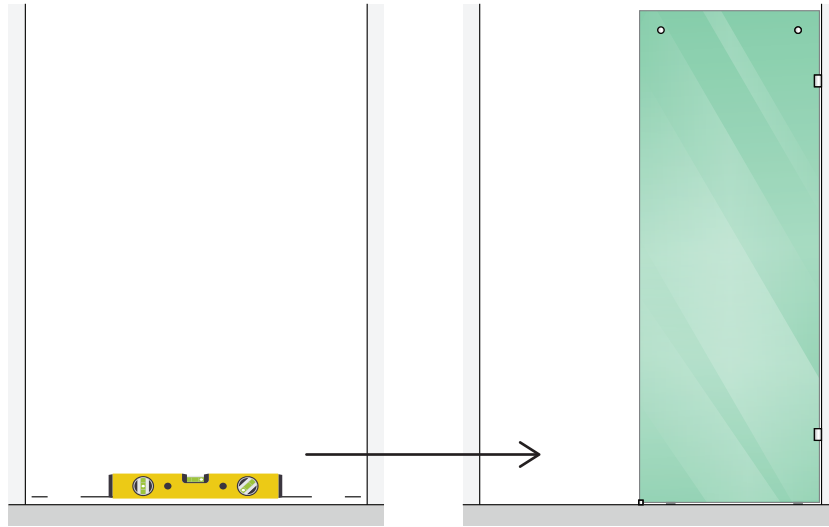


3 Ensure the floor guide is set to suit your desired composition (left or right). Then Proceed to use the grub screw to secure the guide to the bottom leading corner of the fixed panel.

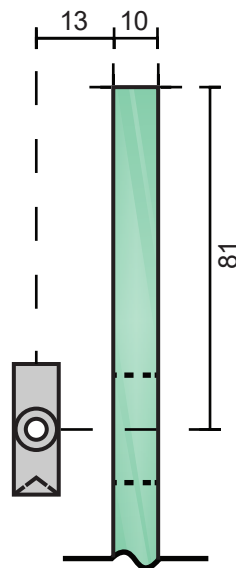


4 Fit the fixed panel to the wall brackets.

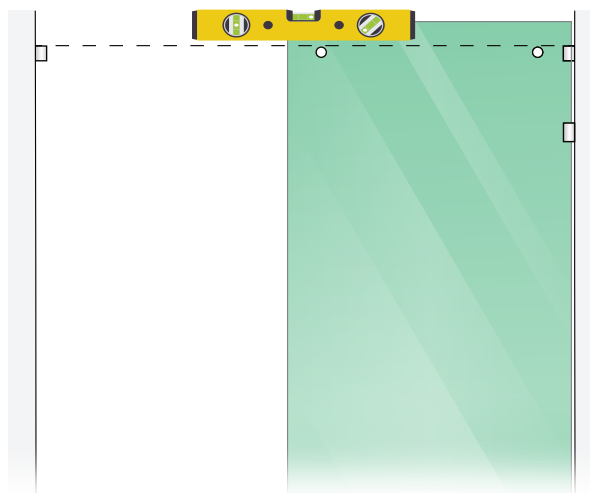
IMPORTANT: Ensure the floor is level and fit glass to highest side.



5 Fit the internal block of the first wall bracket inline with the fixed panel top holes.

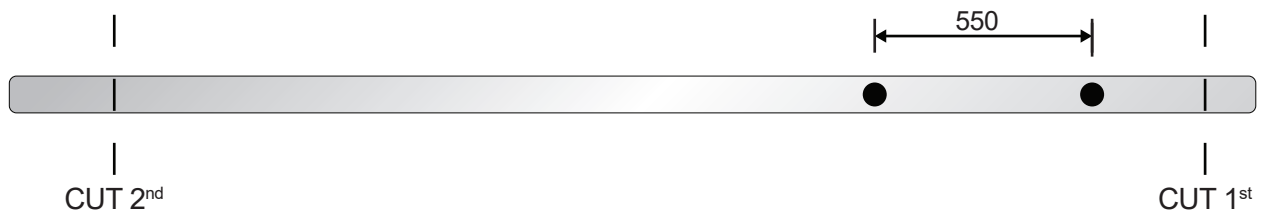


6 Fit the internal block of the second wall bracket inline with the fixed panel top holes and first block.

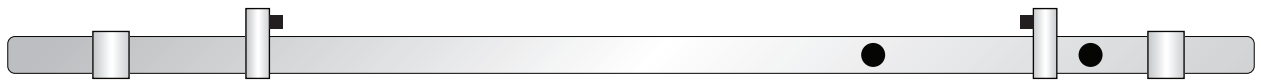


7 Cut both ends of rail to suit width between wall bracket blocks.

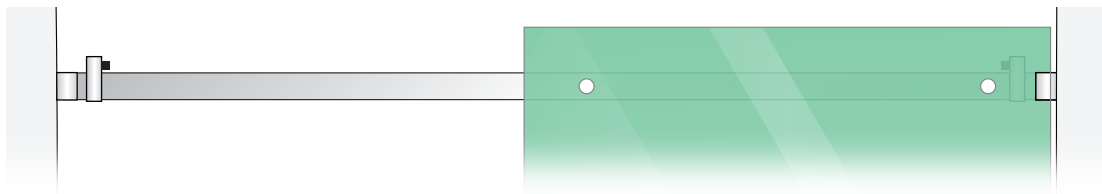
IMPORTANT: Cut fixed panel end first ensuring the holes in rail line up with the holes in glass fixed panel.



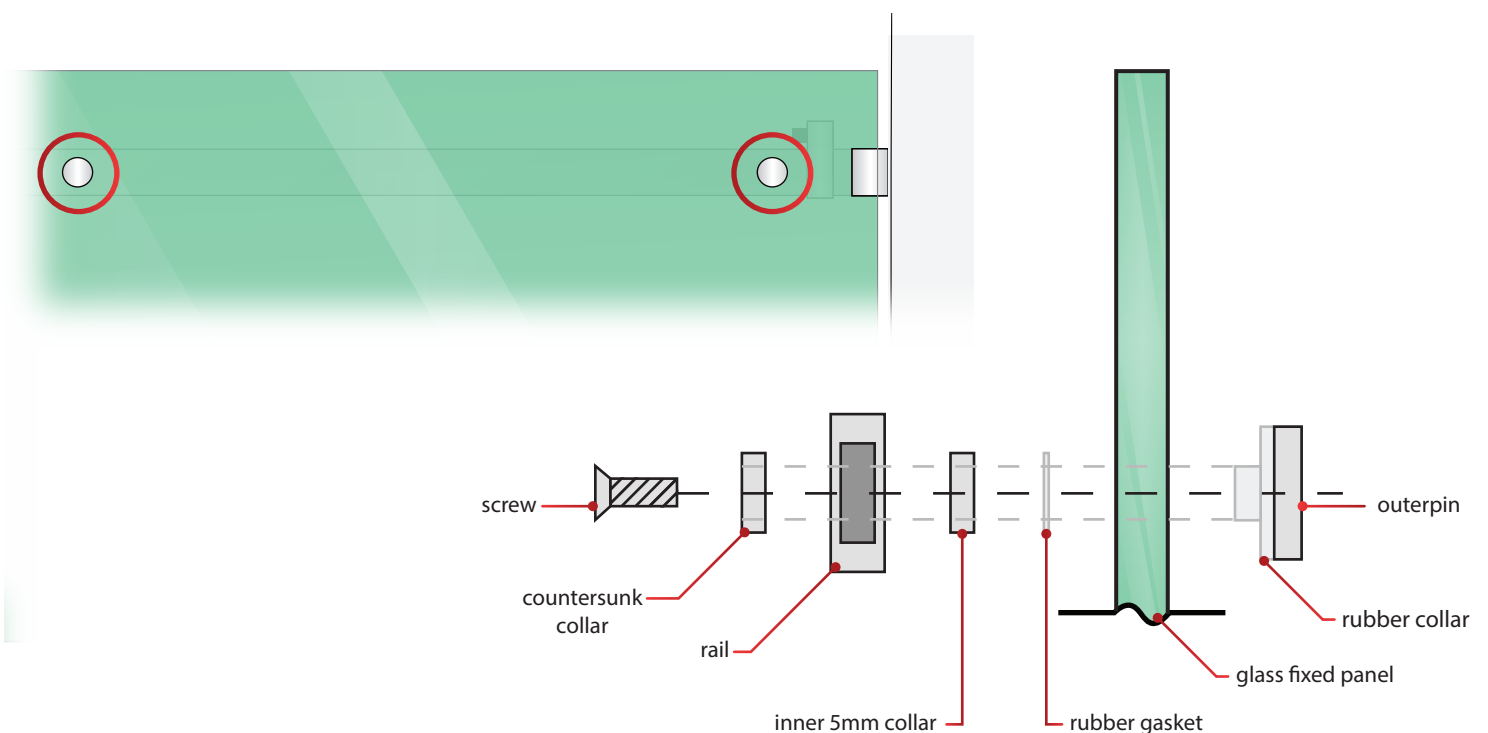
8 Slide 2x stoppers and 2x wall bracket sleeves onto the rail before fitting to the blocks.



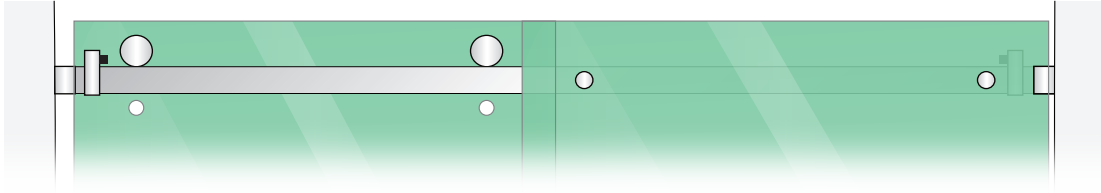
9 Attach rail to wall brackets by sliding wall bracket outer sleeves over the wall blocks and secure with grub screws.



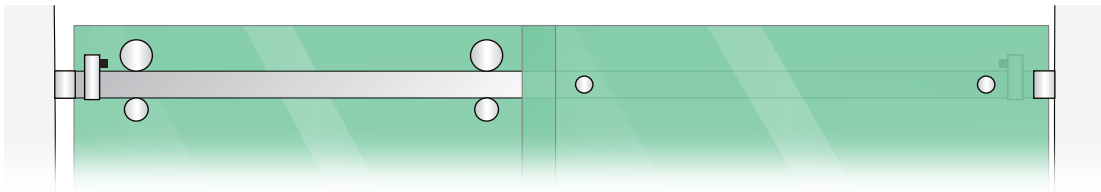
10 Attach fixed rail connectors to connect rail to fixed glass panel.



- 11** Fit 2x rollers to door facing out. Then fit door bumper to leading door edge. Hang door on the rail while fitting bottom edge into the floor guide and adjust until level.



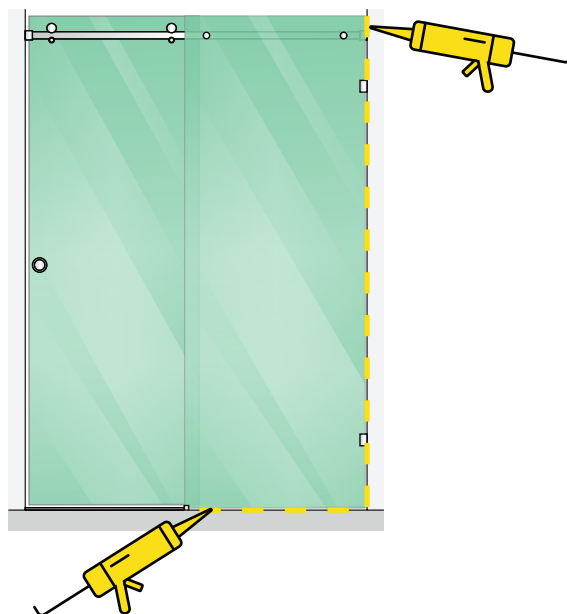
- 12** Fit door stabiliser guides to door and adjust to prevent door from lifting.



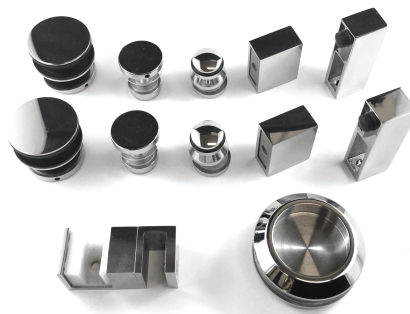
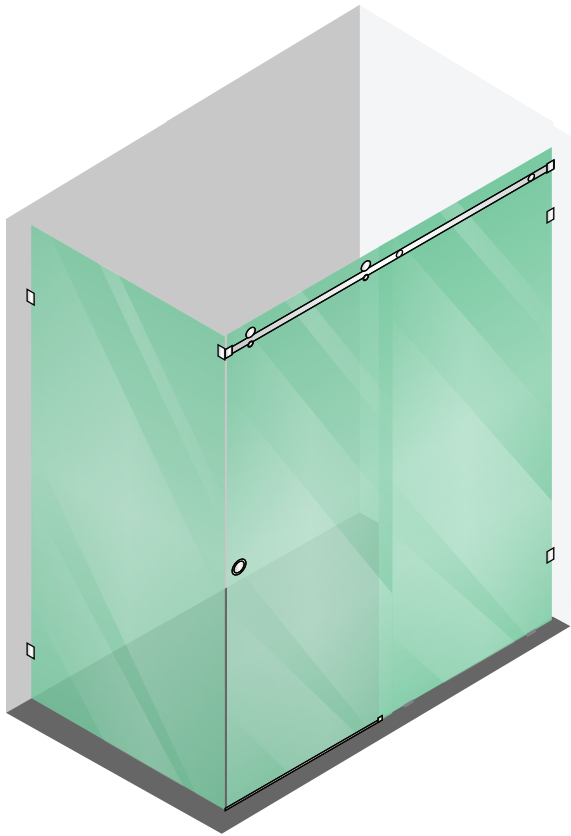
- 13** Fit recessed handle to the door.



- 14** Seal fixed panel with silicone.



RETURN COMPONENTS



Our Kit Includes

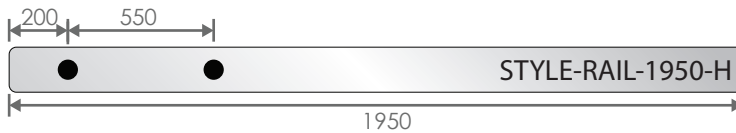
- 2 x Door Upper Rollers
- 2 x Door Stabiliser Guides
- 2 x Fixed Panel Rail Connector
- 2 x Wall Brackets
- 2 x Stoppers
- 1 x Floor Guide
- 1 x Recessed Round Handle
- 1 x Allen Key & Screws Kit

RAILS AVAILABLE

Blank Rails

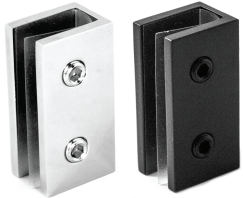


Drilled Rails



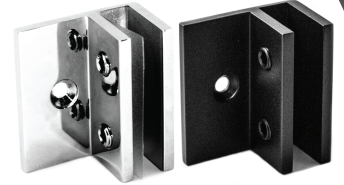
WALL BRACKETS

U-Clamps SCS-07



Solid Brass
Easily fixes glass to walls.

Offset Brackets SCS-10



Solid Brass
Suits close-to-edge wall mounting.

SEALS AVAILABLE

Panel Seal STYLE-PANEL-SEAL



2050mm Flexible PVC
Suits 10mm Glass
Easy installation on fixed panels

Door Bumper Stopper STYLE-BUMPER-STOP



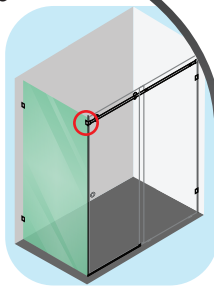
2038mm Suit 10mm Glass
Prevent contact with wall

OPTIONS AVAILABLE

Style Series End Cap STYLE-09



Solid Brass
Required to connect return panel
Suits 8-10mm Glass



Style Series Panel Rail Connector STYLE-03

Solid Brass
Extra Fixing option
To suit Style Series Rails



EXTRAS AVAILABLE

Clear Spacer Blocks SBC-03



Pack of 10
10mm x 3mm Blocks
To be placed under fixed panels

Glazing Silicone - Clear F-790

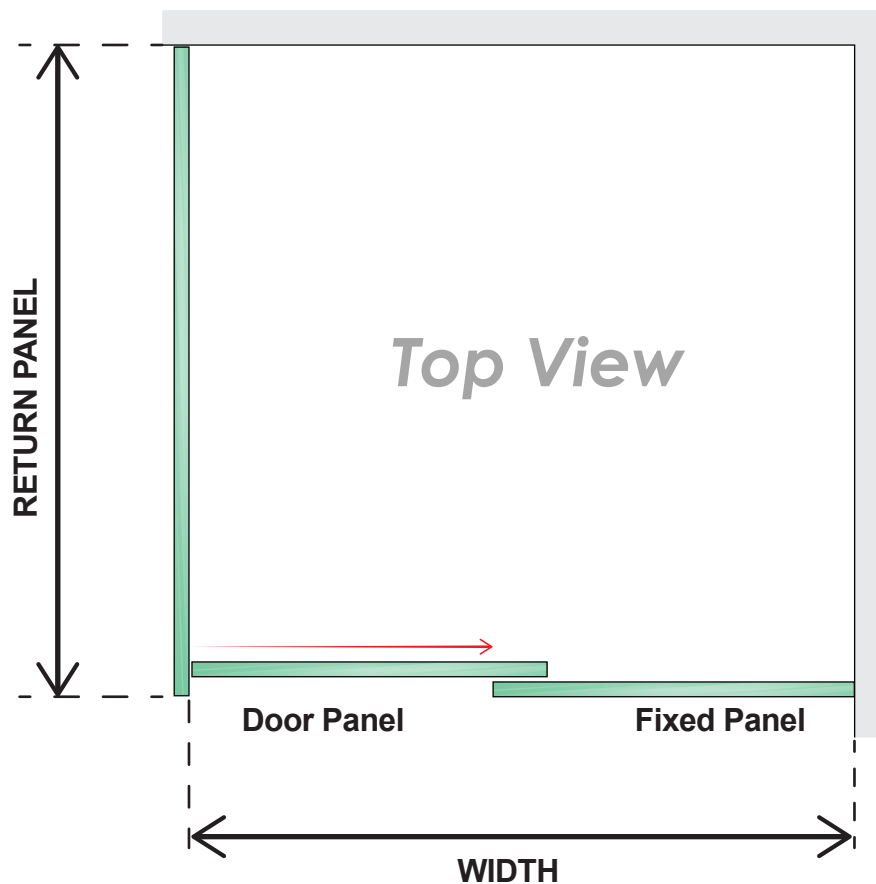
300g Tube Silicone Seal
Sanitary Silicone sealant
high performance
neutral cure silicone



TOOLS REQUIRED

- Cordless drill
- Pencil
- Hacksaw
- Level
- Ø8mm masonry drill bit
- Tape measure
- Screwdriver
- Silicone gun

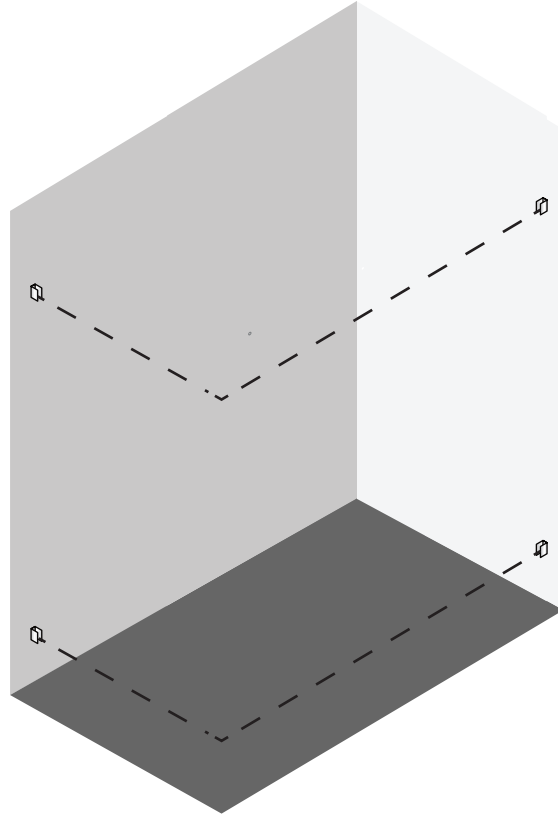
MESUREMENTS



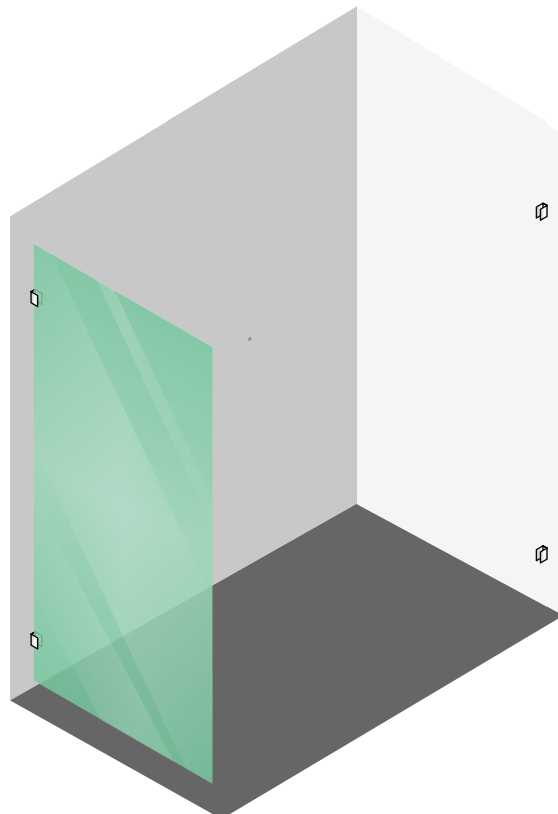
- Return panel width measured from wall to front face of fixed inline panel.
- If using a wall bracket to affix returned panel to wall, a deduction needs to be made to the glass return panel width to allow for bracket gap (3-5mm).
- When measuring width for a configuration with a return panel, it is measured from wall to inside edge of 10mm thick return panel.

STEP-BY-STEP GUIDE

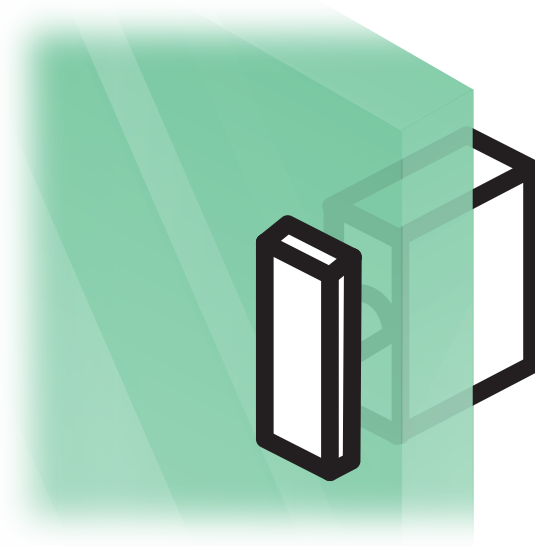
- 1 Fit return panel wall brackets at the same height as fixed wall brackets.



- 2 Fit return panel to wall brackets and pack leading edge to avoid glass hitting the tiles.
IMPORTANT: Ensure the floor is level and fit glass to highest side.



- 3 Fit 90° bracket to return panel.



- 4 REFER TO STEP-BY-STEP GUIDE FOR INLINE INSTALLATION.

- 5 Seal return panel with silicon.

