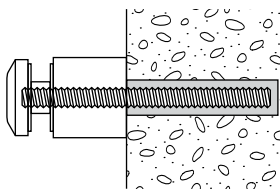
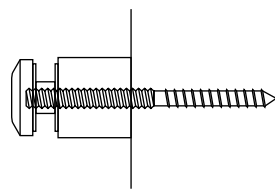


APPLICATIONS

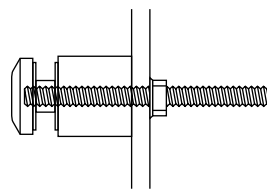
Chemset to Masonry



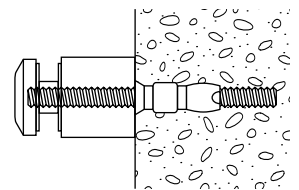
Lag Screw



Nut & Washer



Masonry



PRODUCT TYPE/

Glass Adapter 25mm & 50mm Wall Mounted Concealed Stand-offs

TECHNICAL/

- 316 stainless steel
- 38mm diameter
- To suit wall mount or square post and M10 threads/coach threads

CODE

DESCRIPTION

GA-04 38x25 Glass Adapter

GA-05 38x50 Glass Adapter

AVAILABLE FINISHES/

- Polished
- Satin
- Black